



**PASCO Specialty & Mfg., Inc.**

P.O. Box 1667  
South Gate, CA 90280  
Phone (310) 537-7782  
Fax (800) 737-2726

7529 Perryman Court  
Curtis Bay, MD 21226  
Phone (410) 360-5010  
Fax (877) 377-6466

www.pascospecialty.com

**TECHNICAL SPECIFICATION SUBMITTAL**

Repair Kit for Lever & Twist handle nickle plated Brass waste drain.  
For stainless steel commercial Sinks with a 3-1/2" drain opening, also fits T & S.

Job Name \_\_\_\_\_ Date \_\_\_\_\_

Model Specified \_\_\_\_\_ Quantity \_\_\_\_\_

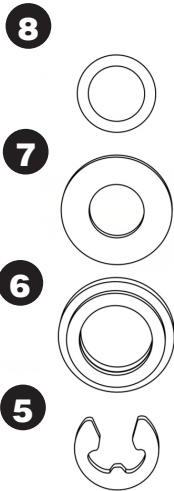
Customer/Wholesaler \_\_\_\_\_

Contractor \_\_\_\_\_

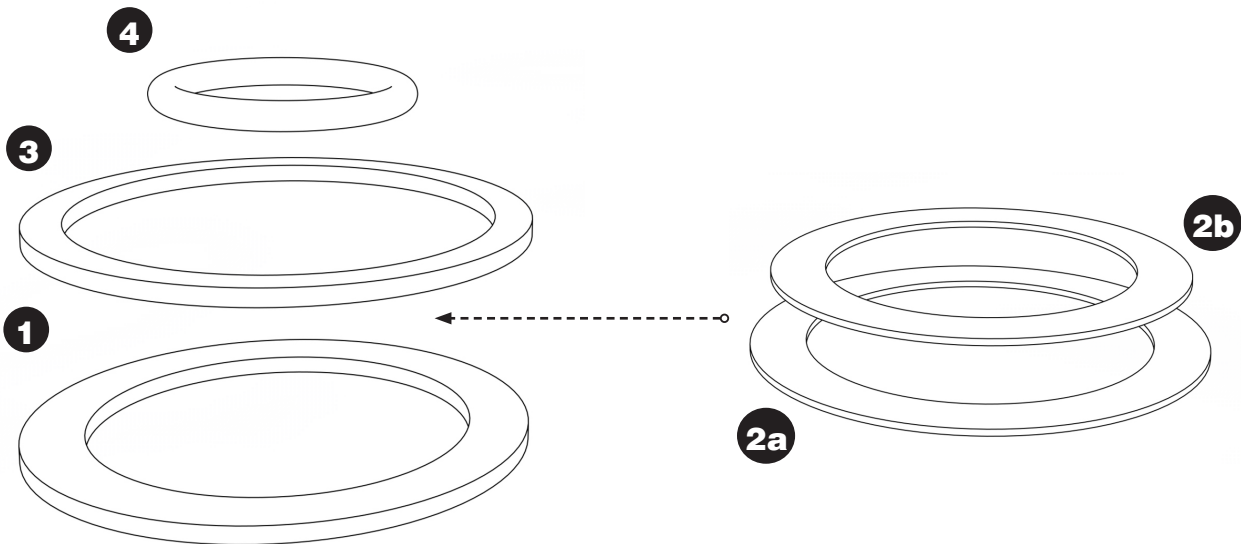
Architect/Engineer \_\_\_\_\_

Engineering Specification:

**Twist Lever Drain Washer Repair Kit  
#33150**



1	Rubber washer for 3" drain
2a	Paper washer for 3-1/2" drain
2b	Paper washer for 3" drain
3	Rubber washer for 3-1/2" drain
4	Rubber o-Ring for stopper
5	S.S. #304 1 c-clip
6	Plastic washer for handle
7	S.S. #304 washer for handle
8	Rubber small o-ring



WARNING: Birth Defects, Reproductive Harm, and Cancer. www.p65warnings.ca.gov.