

BLOW PLASTIC EQUIPMENT PADS

Submittal Information

Part No	18041-18048B
Document No.	SPEC18041
Date	2021-9-10
Revision	02

General Properties

- Material: Plastic HDPE
- Finish: Black /Gray
- Recommended temperature range: -48°F to 180°F
- Ignition temperature: 725 °F
- Flash ignition temperature: 698°F
- Tested per ASTM D2299. Does not crack, flake, or warp when subjected to...
 - R-22 or R-134a Refrigerant
 - Compressor oil
 - Salt solution (20% by volume)
 - Synthetic canine urine

Description

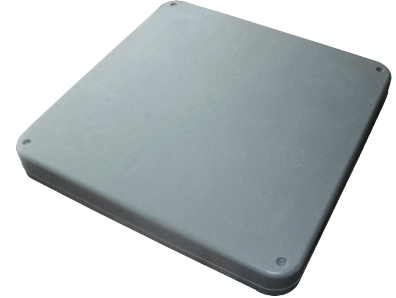
BLOW PLASTIC EQUIPMENT PADS designed to support HVAC outdoor units and other outdoor equipment. These pads are a great environmentally friendly alternative to concrete equipment pads, thanks to the recycled content and low raw material usage when formed. The rugged design and optimized rib-pattern provide for excellent support on soil and gravel terrain. Available in both 2" and 3", depending on local building code requirements.

Application

- HVAC outdoor units.
- Installation: pad should be placed on compacted level soil, gravel, or harder surfaces, including but not limited to concrete or asphalt.

Features

- Lightweight, durable, and exceptionally strong.
- Textured top surface to reduce slippage.
- Concrete gray color / Black color.
- Unaffected by UV exposure or extreme weather.



2" Thick Pads

Item No.	Specifications	EST. ALLOW. LOAD	Std. Pkg.
18041/18041B	24" x 24" x 2"	900 LBS	5
18043/18043B	30" x 30" x 2"	1050 LBS	5
18045/18045B	32" x 32" x 2"	1120 LBS	5
18047/18047B	36" x 36" x 2"	1280 LBS	5

3" Thick Pads

Item No.	Specifications	EST. ALLOW. LOAD	Std. Pkg.
18042/18042B	24" x 24" x 3"	860 LBS	5
18044/18044B	30" x 30" x 3"	1000 LBS	5
18046/18046B	32" x 32" x 3"	1100 LBS	5
18048/18048B	36" x 36" x 3"	1250 LBS	5
18050/18050B	18" x 38" x 3"	1120 LBS	5

B= Black color

To utilize maximum load rating, the weight should be evenly distributed across the pad surface.



WARNING: Birth Defects, Reproductive Harm, and Cancer.
www.p65warnings.ca.gov.