

CONCENTRIC VENT KITS

Submittal Information

Part No.	22152-22153
Document No.	SPEC22152
Date	2020-01-20
Revision	01

Warning

- Do not use the Concentric Vent kit for anything other than a Category IV furnace. Failure to follow this warning could result in fire, personal injury or death.
- Do not operate the furnace until the installation and assembly of the Concentric Vent and all piping are completed. Failure to follow this warning could result in product damage or improper operation, personal injury or death.
- Recirculation of flue gasses may occur, causing the intake pipe to freeze shut during cold weather operation if the venting system is not installed per these guidelines. If the venting system is not installed properly, flue gas may recirculate, possibly causing the intake pipe to freeze shut during cold weather.
- Birth Defects, Reproductive Harm, and Cancer- www.p65warnings.ca.gov

General Properties

Material:	Polyvinyl Chloride (PVC)
Finish:	Plain White
Standard:	ASTM-D1785, UL-1738.

NOTE: The Concentric Vent reduces the allowable intake/vent piping length by 5 feet from that listed in the basic furnace installation instructions.

Each concentric vent kit contains the following items:

- Combustion Air Inlet Cap
- Air Inlet Pipe
- Vent Pipe
- Intake/Vent Concentric WYE Tee
- Installation Instructions on box

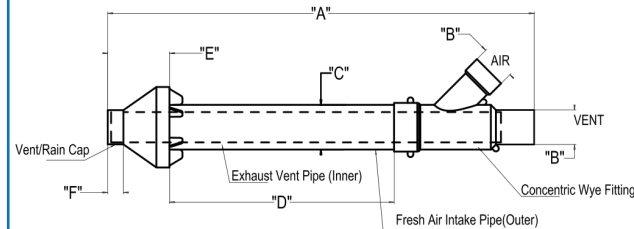
Features

- Cut only one hole instead of traditionally cutting two holes through roof or side wall for exhaust and intake pipes to complete installation.
- The concentric design make intake fresh air cut off exhausting smoke. Preferred vertical roof termination which is less susceptible to damage, reduces the chance of intaking contaminants, and has less visible vent vapors. Horizontal side wall termination installation. Dakota Sourcing also provide side wall horizontal termination kit as more options. Vent screens are available for necessary applications.
- The Concentric Vent reduces the allowable intake/vent piping length by 5 feet from that listed in the basic furnace installation instructions.

NOTE: Refer to installation instructions provided with each unit. Install in accordance with local plumbing code. Complied with UL 1738.



Concentric Vent Kit Dimensions

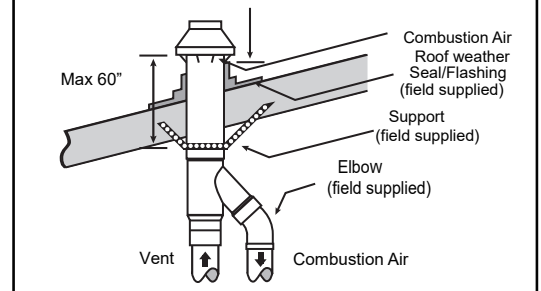


Part No.	A	B Nominal PVC Pipe Size	C	D	E	F
22152	33" (840mm)	2"	3.5" (89mm)	17.5" (445mm)	4.85" (123mm)	1.2" (30.5mm)
22153	39" (990mm)	3"	4.5" (114mm)	22" (559mm)	5.5" (140mm)	1.6" (41mm)

NOTE: Read the entire instruction manual before starting the installation.

Typical Roof Install

Maintain 12" minimum (18" for Canada) clearance above highest anticipated snow level. maximum of 24" above roof.



Sidewall Termination Details

NOTE: Securing strap must be field installed to prevent movement to termination kit in side wall

