



2" QUICK CONNECT SHOWER DRAIN



Protected with TechCoat finish

Quick Clamping Gasket And Collar For Ceramic Tile Showers

Clamping collar securely attaches drain to drain line

Speeds installation

Extra heavy (.050) strainer

| PART NUMBER | TOP FLANGE DIAMETER | BOTTOM FLANGE DIAMETER |
|-------------|---------------------|------------------------|
| 7990 | 5-1/2" | 7" |

"QUICK TEST" SHOWER DRAIN



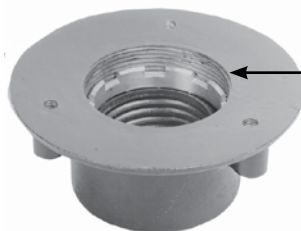
For Ceramic Tile Showers
Threaded for test nipple
Extra heavy (.050) strainer

Protected with TechCoat finish

| PART NUMBER | DRAIN CONNECTION |
|-------------|-------------------|
| 8006 | 2" IPS |
| 8007 | 1-1/2" IPS |
| 8008 | 2" CAULK |
| 8011 | 2" CAULK w/Gasket |
| 8012 | 2" NO-HUB |

| PART NUMBER | DESCRIPTION |
|-------------|--------------------------------|
| 8009 | QUICK CAULK RUBBER GASKET ONLY |

2" QUICK SET SHOWER DRAIN



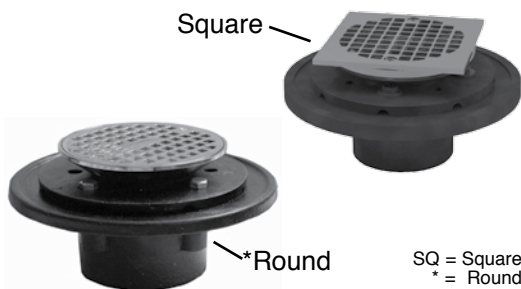
Internal locknut & gasket

Protected with TechCoat finish

For Ceramic Tile Showers
Internal locknut and gasket for 2" DWV
Extra heavy (.050) strainer

| PART NUMBER | TOP FLANGE DIAMETER | BOTTOM FLANGE DIAMETER |
|-------------|---------------------|------------------------|
| 8014 | 5-1/2" | 5-1/2" |

SHOWER & FLOOR DRAIN



Square

*Round

SQ = Square
* = Round

Adjustable strainer
4-3/16" Heavy chrome plated brass strainer with brass spud

| PART NUMBER | PART NUMBER | DRAIN CONNECTION | TOP FLANGE DIAMETER | BOTTOM FLANGE DIAMETER |
|-------------|-------------|--|---------------------|------------------------|
| *60201 | 60201-SQ | 2" INSIDE CAULK | 5" | 7" |
| *60203 | 60203-SQ | 2" IPS | | |
| *60205 | 60205-SQ | 2" NO-HUB | | |
| *60981 | 60981-SQ | 4-3/16" Threaded chrome plated brass strainer only | | |