

Concrete Anchoring System

- Suitable for concrete, brick applications
- Suitable for some preservative-treated wood applications
- One drill bit included in each box
- 100 Per box

PART NUMBER	DESCRIPTION
41103	3/16" x 1-1/4" Hex Washer Head
41104	1/4" x 1-1/4" Hex Washer Head
41105	1/4" x 1-3/4" Hex Washer Head



Waffle Squares Equipment Pads

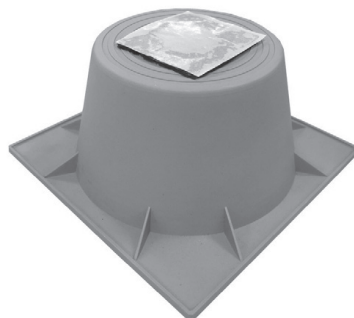
- Designed to reduce problems in industry caused by structure born vibrations and noise very thick and very durable
- Have excellent vibration-reducing effect



PART NUMBER	DESCRIPTION
18317	2" x 2" x 3/4"
18318	4" x 4" x 3/4"
18319	18" x 18" x 3/4"

One Piece Condenser Risers

- Sturdy & Stable
- Used to elevate the system from the potential threat of rain or snow
- Extends the life of your condenser or heat pump by allowing the base of the unit to stay dry



PART NUMBER	DESCRIPTION
18031	6"