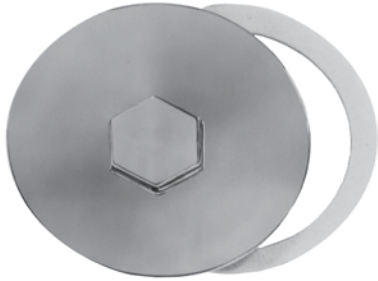




Drum Trap Plate

- 4-1/4" Diameter with gasket
- CP die cast
- 20 Threads



PART NUMBER
1837

Sani-Cap

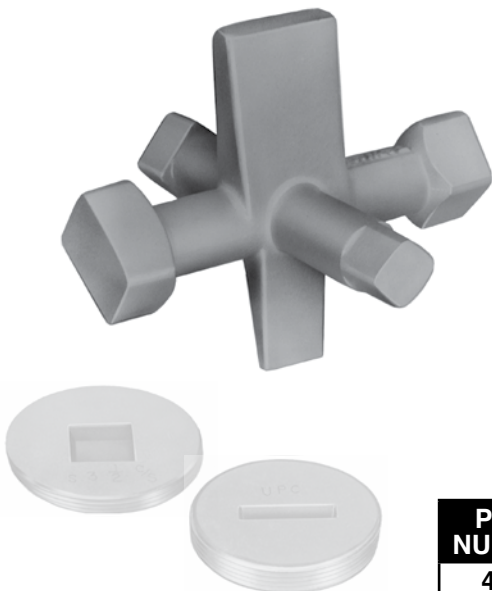
- Chrome plated brass cleanout cap
- Screws on to cover unsightly cleanout nipples
- Decorative chrome finish
- Choose nipple which fits closest to the finished wall, leave approximately 4 threads showing. Screw on Sani-Cap for the finishing touch



PART NUMBER	SIZE
1835	1-1/2"

Eureka Cleanout Plug Wrench

- This unique tool fits either slotted or square countersunk cleanout plugs
- Strong, malleable iron
- Fits slotted or square



PART NUMBER
4567

Cut Length Oakum Oiled or White

- Convenient, labor saving cut lengths
- Non-spitting
- Contains no tar
- Made to pack well, caulks tight
- Treated with a special compound to expand when wet



Oil Treated

PART NUMBER	DESCRIPTION
2899	1 bag with 4 strands - 27"
2897	Small box w/ 24 strands of 27" lengths
2898	Large case with 10 boxes of #2897

White - No Oil

PART NUMBER	DESCRIPTION
28100	1 bag with 9 strands - 27"