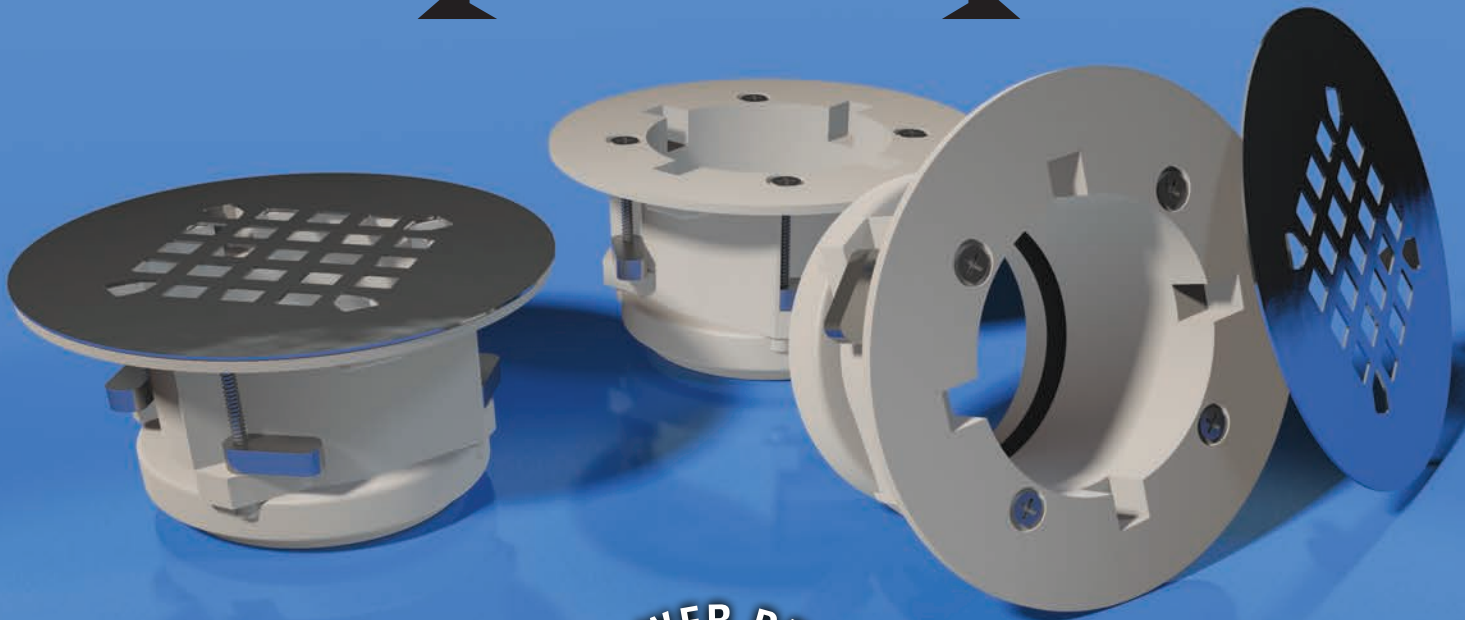


PASCO

Presents



PART
NUMBER
SD1000

Installs entirely from the TOP ↓

- Use in fiberglass or plastic showers.
- Clear visual instructions to remove the old drain.
- Shower tear-out eliminated!
- Fits 2-inch ABS, and PVC Pipe.
- Most repairs done in less than 30 minutes.
- Allows one-person shower stall installations.
- Drain installs **AFTER** shower stall is set.





PASCO Specialty & Mfg., Inc.

Since 1936

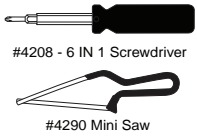
11156 Wright Road • P.O. Box 1747 • Lynwood, CA 90262-1247
Phone: 310-537-7782 • Fax: 310-537-5065

7529 Perryman Court • Curtis Bay, MD 21226-1752
Phone: 410-360-5010 • Fax: 877-377-6466

www.pascospecialty.com

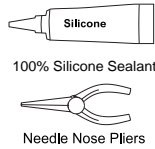
Recommended Tools and Materials

We Sell Adapters for the Pipe Sizes Below
To Order Call (310) 537-7782



#4208 - 6 IN 1 Screwdriver

#4290 Mini Saw

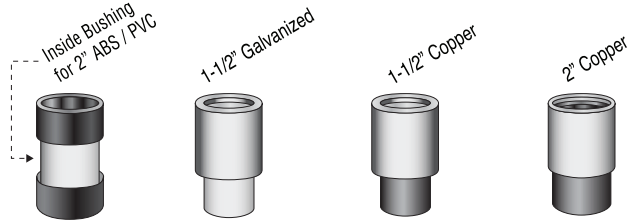


100% Silicone Sealant

Needle Nose Pliers

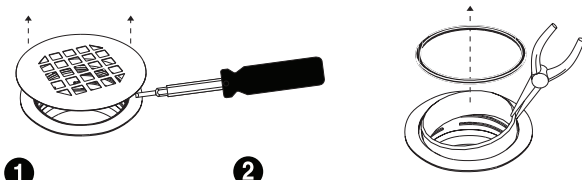


Liquid Dish Soap



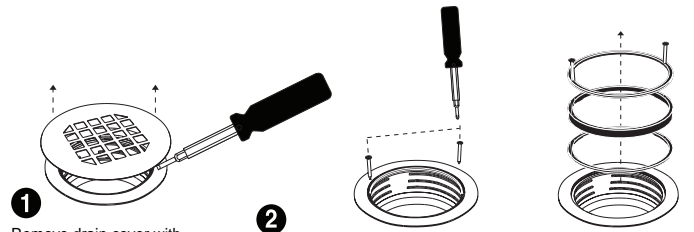
Removing Drain Seal - 2 Part System (Threaded Nut & Gasket Type)

Removing Drain Seal - 3 Part System (AB&A Sure Fit)



1 Remove drain cover with flat blade screwdriver.

2 Extract the compression gasket assembly exposing 2" pipe riser and drain body by unthreading compression nut and pulling gasket out with needle nose pliers.

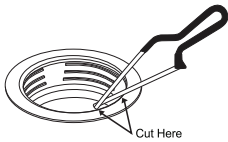


1 Remove drain cover with flat blade screwdriver.

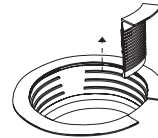
2 Insert drywall screws into opposite sides of ring-gasket and split ring removing one at a time exposing 2" pipe riser & drain body.

Removal of Drain Body

3 With hacksaw, make two vertical cuts approximately 1" apart through drain body. Cut completely through drain body without cutting into shower pan or scoring pipe riser.

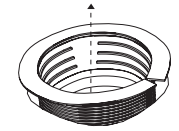


5 Once horizontal flange is cut, use flat blade screwdriver to pry on 1" flange to break free from shower pan.



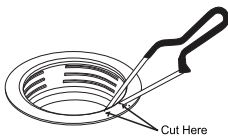
6 Remove 1" width of the drain body from pan.

7 Squeeze the shower drain to collapse it, this allows the retaining nut below shower base to drop. Nut stays below.



8 Remove shower drain from pan. Clean shower surface around drain hole, above and below the pan to insure proper seal and unrestricted wing movement.

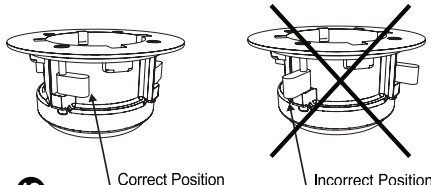
4 Continue cutting horizontally through drain flange to weaken it, but not deep enough to damage pan.



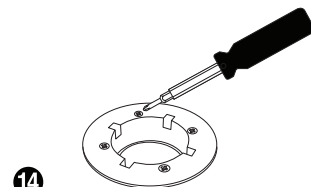
WingTite Installation



9 Remove WingTite from package. Installation is ready to begin.

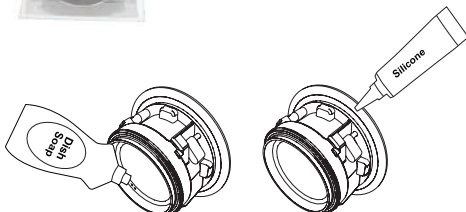


12 The four fastening wings must be against drain body at time of insertion into shower pan.



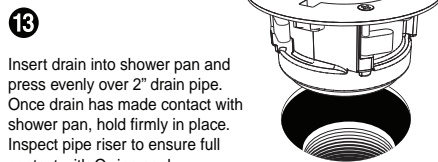
14 Tighten all four Phillips head wing screws evenly until drain is secure in pan. 20 Inch pounds maximum!

DO NOT TIGHTEN PHILLIPS HEAD WING SCREWS WITH POWER TOOLS !!!



10 Apply liquid dish soap to drain O-ring as lubricant.

11 Apply a generous amount of 100% silicone to underside of WingTite drain flange.



13 Insert drain into shower pan and press evenly over 2" drain pipe. Once drain has made contact with shower pan, hold firmly in place. Inspect pipe riser to ensure full contact with O-ring seal.

15 Clean excess silicone from drain and pan with rag. Test the shower drain and install cover.

