



**PASCO Specialty & Mfg., Inc.**

P.O. Box 1667  
 South Gate, CA 90280  
 Phone (310) 537-7782  
 Fax (800) 737-2726

7529 Perryman Court  
 Curtis Bay, MD 21226  
 Phone (410) 360-5010  
 Fax (877) 377-6466

www.pascospecialty.com

**TECHNICAL SPECIFICATION SUBMITTAL**

Medium Duty - Wall Mount - 4" Centers

Job Name \_\_\_\_\_ Date \_\_\_\_\_

Model Specified \_\_\_\_\_ Quantity \_\_\_\_\_

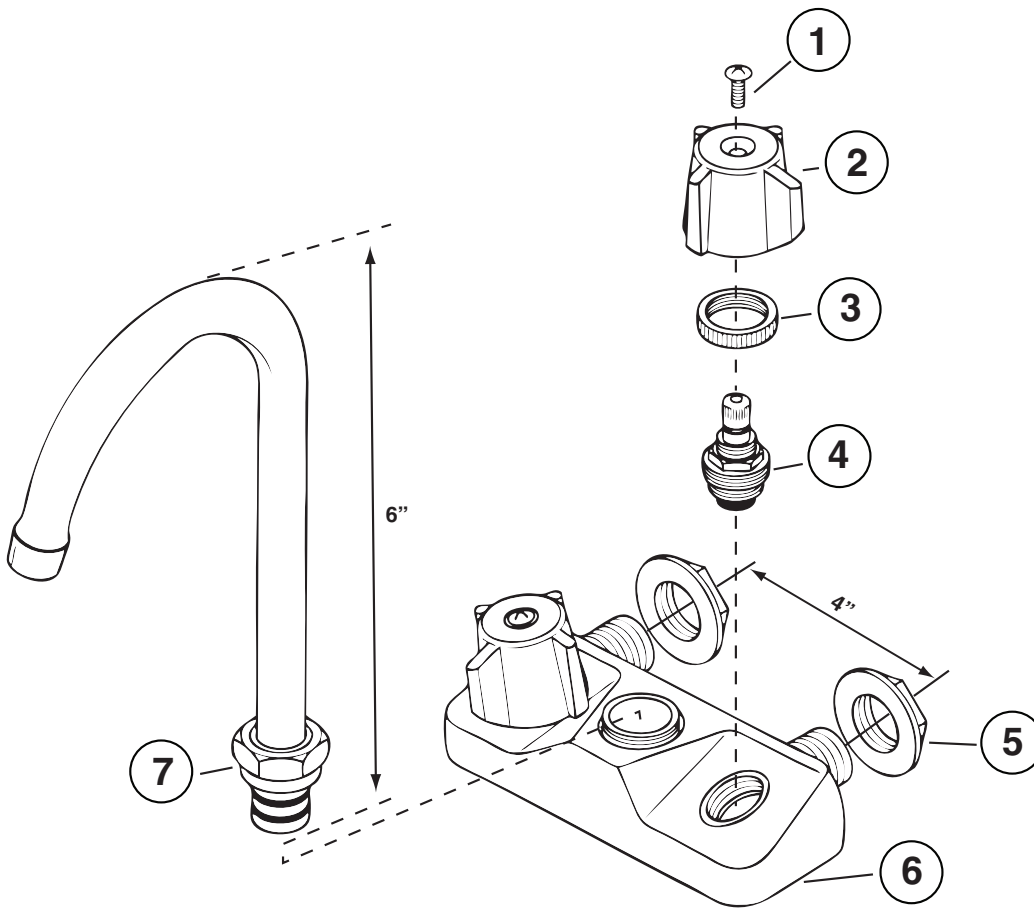
Customer/Wholesaler \_\_\_\_\_

Contractor \_\_\_\_\_

Architect/Engineer \_\_\_\_\_

**Engineering Specification: Commercial Faucet Medium Duty - Wall Mount - 4" Centers**

**6" Gooseneck Heavy Duty Faucet  
 #33161**



**330 Series Stems  
 33160 - Set of Handles**

NO.	PART NAME
1	SCREW
2	HANDLE
3	NUT
4	STEM
5	COUPLING NUT
6	HOUSING
7	SPOUT

- Chrome plated brass
- 1/2" FPT inlets
- Satin finished brass water ways
- 55/64" Female water saver aerator
- Twin Seal chrome plated brass tubular swing spout



WARNING: Birth Defects, Reproductive Harm, and Cancer. [www.p65warnings.ca.gov](http://www.p65warnings.ca.gov).