



**PASCO Specialty & Mfg., Inc.**

P.O. Box 1667  
 South Gate, CA 90280  
 Phone (310) 537-7782  
 Fax (800) 737-2726

7529 Perryman Court  
 Curtis Bay, MD 21226  
 Phone (410) 360-5010  
 Fax (877) 377-6466

www.pascospecialty.com

**TECHNICAL SPECIFICATION SUBMITTAL**

Stainless steel basket sink strainer for domestic and commercial sinks.

Job Name \_\_\_\_\_ Date \_\_\_\_\_

Model Specified \_\_\_\_\_ Quantity \_\_\_\_\_

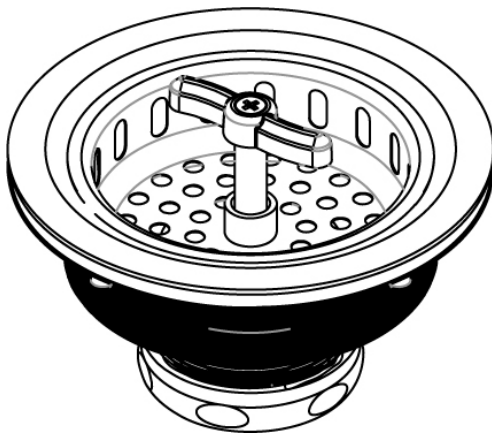
Customer/Wholesaler \_\_\_\_\_

Contractor \_\_\_\_\_

Architect/Engineer \_\_\_\_\_

Engineering Specification: Stainless steel sink strainer with spin lock and removable stainless steel strainer.

## Spin Lock Basket Strainer

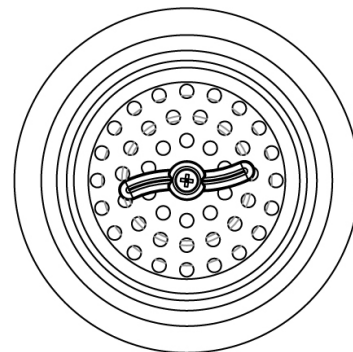


PART NUMBER	CONNECTION
21917	Complete Unit
21923	Basket Only

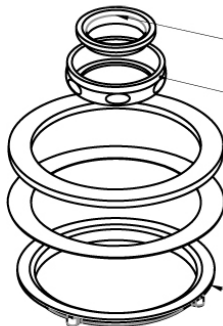
- 3-1/2" to 4" sink drain openings
- Stainless steel screw in basket
- Brass locknut and slip joint nut
- Poly tailpiece washer



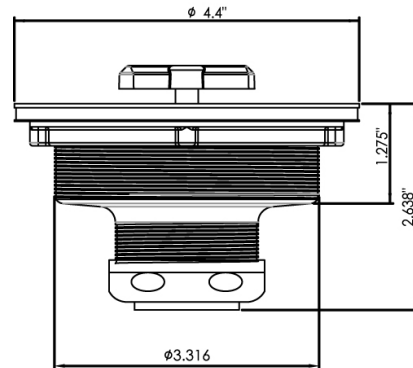
BASKET STRAINER (SUS430)



BODY STRAINER (SUS430)



- PLASTIC WASHER (PLASTIC)
- COUPLING NUT (BRASS)
- RUBBER WASHER (RUBBER)
- PAPER WASHER (PAPER)
- LOCK NUT (BRASS)



WARNING: Birth Defects, Reproductive Harm, and Cancer. www.p65warnings.ca.gov.